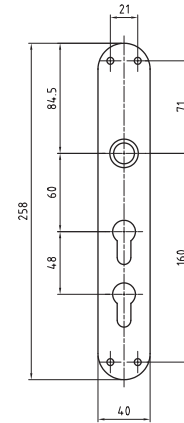


5345E

Stainless steel long plate



Standard version

Satin stainless steel

Length: 258 mm

Width: 40 mm

Projection: 2 mm

16 mm guide: Glutz glide inwards

For lock 1204

5345E · 1 · 2 · 3 · 4 · 5 · 6 · 7

1 Execution

2 Guide

3 Mounting
fixe | FEHO

4 Guide sleeve

5 Cutout

6 Centres

7 Surface

8 Stück | Befestigungslöcher

0 glide
2 Buttonhole
3 glide auswärts
4 twin glide auswärts
5 glide > Ø 23 mm
7 glide auswärts
konisch
9 blind

0 ohne
1 easyfix

4 4 pieces

66 RZ|RZ
67 RZ|PZ
77 PZ|PZ

60 60/108 mm
78 78/126 mm

00 Stainless steel matt
11 Stainless steel polished
44 Antibacterial
51 RAL 9005 black matt
99 On request