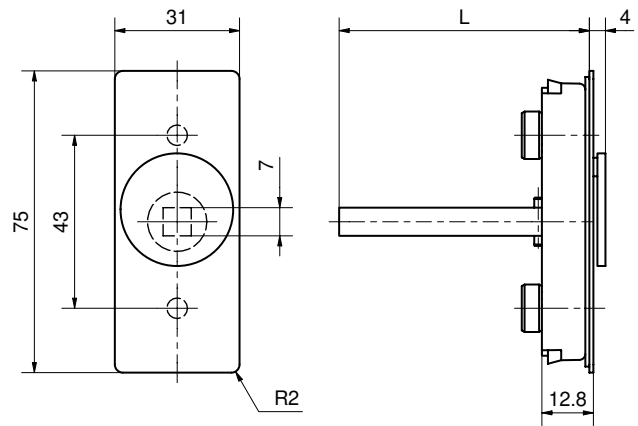


## 51106 DFV

Spindle rose flush with cover



### Standard version

Satin stainless steel  
 4 x 90° raster  
 Left / right applicable  
 Square spindle 7 x 38 mm  
 75 x 31 x 13 mm  
 Fixing centres 43 mm  
 Studs Ø 9,5 / 12 mm  
 Suitable for all tilt and turn systems  
 With cover

### 51106 DFV · ① · ②

① Bolt length

**024** 24mm  
**026** 26mm  
**032** 32mm  
**035** 35mm  
**038** 38 mm  
**040** 40mm

② Surface

**00** Stainless steel matt  
**11** Stainless steel polished  
**44** Antibacterial  
**51** RAL 9005 black matt  
**99** On request