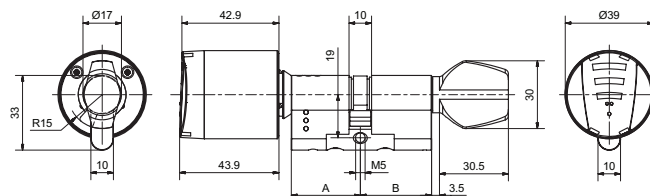


## 83382 E double-knob cylinder

EM / PZ / FLU



### Product profile

Battery-operated electronic cylinder for interior and exterior doors. Opening and closing from outside take place with contact reading of the medium, such as a key tag or chip card, and then the turning of the knob. Opening and closing from the inside is always assured with the mechanical knob.

### Standard version

Exterior E knob with access control function and battery  
Identification via RFID Mifare DESfire EV1 (ISO 14443A)  
Programming via media or wireless access (868 MHz)  
Interior with mechanical knob  
Protection class: IP65, EN 15684 (in preparation)  
Security: Predetermined breaking point on the outside knob, anti-drilling protection, core extraction protection, 3DES encryption  
Installation possible in arbitrary position

### Scope of supply

- E-knob for E-cylinder, including batteries
- batteries
- Mechanical knob

### 83382 · ① · ② · ③ · ④ · ⑤ · ⑥ · ⑦ · ⑧

① Version	② Length A (Outside)	③ Length B (inside)	④ Surface Outside ⑤ Surface inside	⑥ Security	⑦ Knob type	⑧ Reading system
<b>S Standard</b>	<b>31,0</b> mm (Base length)	<b>31,0</b> mm (Base length)	<b>0 Nickel plated</b>	<b>0 Standard</b>	<b>1 Glutz knob</b>	<b>0 Mifare</b>
<b>M Pinion 10</b>	<b>36,0</b> mm (+05 mm)	<b>36,0</b> mm (+05 mm)	<b>1 Nickel polished</b>			
<b>I Biffar</b>	<b>41,0</b> mm (+10 mm)	<b>41,0</b> mm (+10 mm)	<b>2 Brass polished</b>			
<b>Q Pinion 18</b>	<b>46,0</b> mm (+15 mm)	<b>46,0</b> mm (+15 mm)				
	<b>51,0</b> mm (+20 mm)	<b>51,0</b> mm (+20 mm)				
	<b>56,0</b> mm (+25 mm)	<b>56,0</b> mm (+25 mm)				
	<b>61,0</b> mm (+30 mm)	<b>61,0</b> mm (+30 mm)				
	<b>66,0</b> mm (+35 mm)	<b>66,0</b> mm (+35 mm)				
	<b>71,0</b> mm (+40 mm)	<b>71,0</b> mm (+40 mm)				
	<b>76,0</b> mm (+45 mm)	<b>76,0</b> mm (+45 mm)				
	<b>81,0</b> mm (+50 mm)	<b>81,0</b> mm (+50 mm)				
	<b>86,0</b> mm (+55 mm)	<b>86,0</b> mm (+55 mm)				
	<b>91,0</b> mm (+60 mm)	<b>91,0</b> mm (+60 mm)				