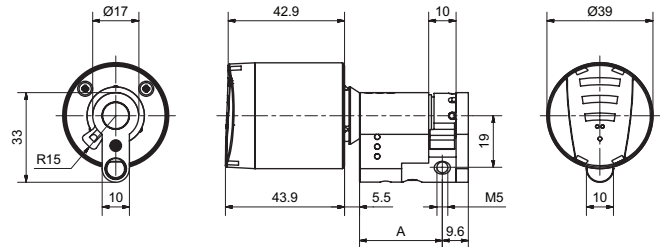
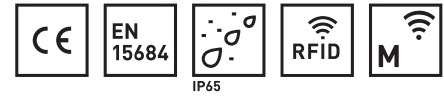


83386 E half-knob cylinder PZ/FLU



Product profile

Battery-operated electronic cylinder for interior and exterior doors. Opening and closing from outside take place with contact reading of the medium, such as a key tag or chip card, and then the turning of the knob.

- E-knob for E-cylinder, including batteries
- E-module

Standard version

- Exterior E knob with access control function and battery
- Identification via RFID Mifare DESfire EV1 (ISO 14443-A)
- Programming via media or wireless access (868 MHz)
- Protection class: IP65, EN 15684 (in preparation)
- Security: Predetermined breaking point on the outside knob, anti-drilling protection, core extraction protection, 3DES encryption
- Installation possible in arbitrary position

Scope of supply

83386 · ① · ② · ③ · ④ · ⑤ · ⑥ · ⑦ · ⑧

① Version	② Length A (Outside)	③ Length B (inside)	④ Surface Outside ⑤ Surface inside	⑥ Security	⑦ Knob type	⑧ Reading system
S Standard	31,0 mm (Base length)	00,0 Half cylinder	0 Nickel plated	0 Standard	0 No mech. Knob	0 Mifare
M Pinion 10	36,0 mm (+05 mm)		1 Nickel polished			
I Biffar	41,0 mm (+10 mm)		2 Brass polished			
Q Pinion 18	46,0 mm (+15 mm)					
	51,0 mm (+20 mm)					
	56,0 mm (+25 mm)					
	61,0 mm (+30 mm)					
	66,0 mm (+35 mm)					
	71,0 mm (+40 mm)					
	76,0 mm (+45 mm)					
	81,0 mm (+50 mm)					
	86,0 mm (+55 mm)					
	91,0 mm (+60 mm)					