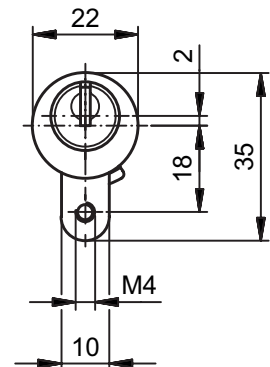
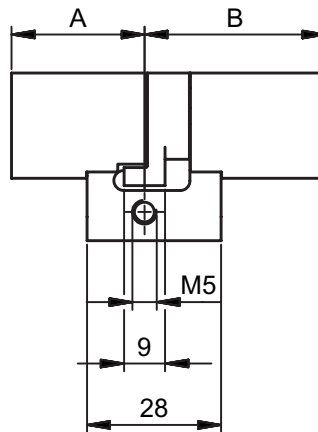


81001

Double cylinder RZ, asymmetric



Product profile

for mortise locks and surface-mounted locks of all types, asymmetric

Standard version

Satin nickel plated brass

Scope of supply

- 1 Fixing screw 81540.75

Important note

Check compatibility with lock manufacturer

Drill protection class «D» according to EN 1303: 2015

81001 · ① · ② · ③ · ④ · ⑤ · ⑥

① Version

② Length A

③ Length B

④ Colour A

⑥ Security

⑤ Colour B

S Standard cam	27,5 mm	37,5 mm 42,5 mm 47,5 mm	0 Satin nickel plated 1 Polished nickel plated 2 Polished brass 3 Satin chrome plated 4 Polished chrome plated 5 Black 6 Antique 7 Bronzed 8 Chemically nickel plated	0 Standard 1 Drill protection
-----------------------	---------	-------------------------------	--	---

Other lengths in 5mm increments possible