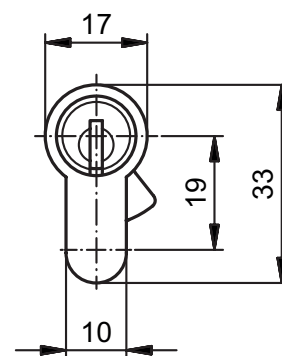
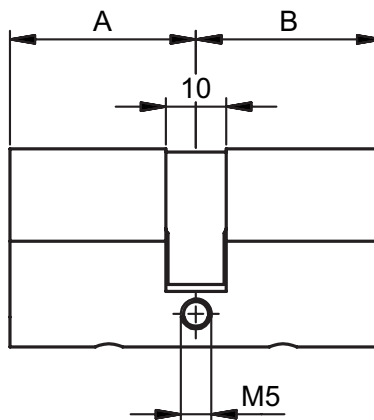


## 81100

### Double cylinder PZ



#### Product profile

for mortise locks and surface-mounted locks of all types

#### Standard version

Satin nickel plated brass

#### Scope of supply

- 1 Fixing screw 81540.75

#### Important note

Drill protection class «D» according to EN 1303: 2015

#### 81100 · ① · ② · ③ · ④ · ⑤ · ⑥

① Version	② Length A	③ Length B	④ Colour A ⑤ Colour B	⑥ Security
<b>S</b> Standard cam	<b>31 mm</b>	<b>31,0 mm</b>	<b>0 Satin nickel plated</b>	<b>0 Standard</b>
<b>F</b> Freewheeling cam	<b>36 mm</b>	<b>36,0 mm</b>	<b>1 Polished nickel plated</b>	<b>1 Drill protection</b>
<b>M</b> Cog wheel cam	<b>41 mm</b>	<b>41,0 mm</b>	<b>2 Polished brass</b>	
	<b>46 mm</b>	<b>46,0 mm</b>	<b>3 Satin chrome plated</b>	
	<b>51 mm</b>	<b>51,0 mm</b>	<b>4 Polished chrome plated</b>	
	<b>56 mm</b>	<b>56,0 mm</b>	<b>5 Black</b>	
	<b>61 mm</b>	<b>61,0 mm</b>	<b>6 Antique</b>	
	<b>66 mm</b>	<b>66,0 mm</b>	<b>7 Bronzed</b>	
	<b>71 mm</b>	<b>71,0 mm</b>	<b>8 Chemically nickel plated</b>	
	<b>76 mm</b>	<b>76,0 mm</b>		
	<b>81 mm</b>	<b>81,0 mm</b>		