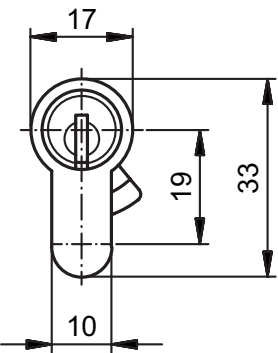
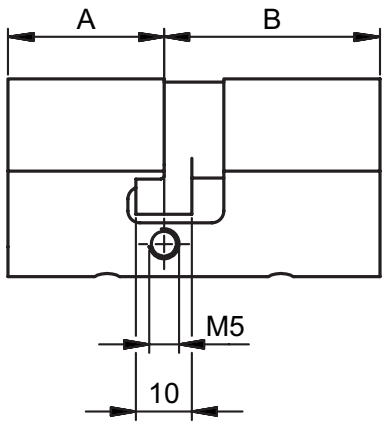


81101

Double cylinder PZ, asymmetric



Product profile

for mortise locks and surface-mounted locks of all types, asymmetric

Standard version

Satin nickel plated brass

Scope of supply

- 1 Fixing screw 81540.75

Important note

Check compatibility with lock manufacturer

Drill protection class «D» according to EN 1303: 2015

81101 · ① · ② · ③ · ④ · ⑤ · ⑥

① Version

② Length A

③ Length B

④ Colour A

⑥ Security

⑤ Colour B

S Standard cam

26 mm

F Freewheeling cam

36,0 mm

41,0 mm

46,0 mm

0 Satin nickel plated

1 Polished nickel plated

2 Polished brass

3 Satin chrome plated

4 Polished chrome plated

5 Black

6 Antique

7 Bronzed

8 Chemically nickel plated

0 Standard

1 Drill protection