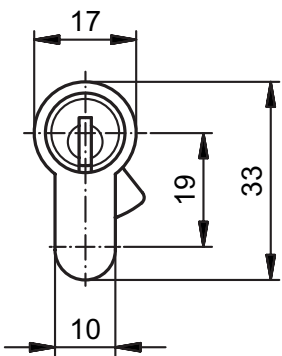
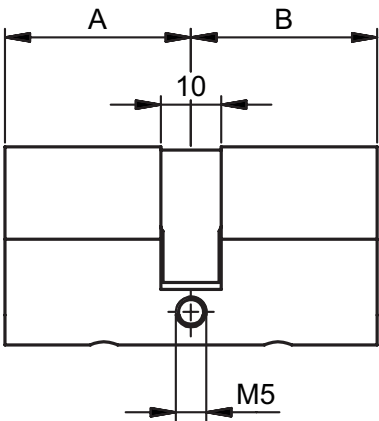




81104

Double cylinder PZ, one side blank



Product profile

One side blank, for locking the cylinder cutout in the lock and fitting on one side. e.g. for renovations or changes to the door functionality

Standard version

Satin nickel plated brass

Scope of supply

- 1 Fixing screw 81540.75

Important note
Blank sleeve on side A

81104 · 1 · 2 · 3 · 4 · 5 · 6

| 1 Version | 2 Length A | 3 Length B | 4 Colour A 5 Colour B | 6 Security |
|---------------------------|------------|------------|-----------------------------------|---------------------------|
| S Standard cam | 31 mm | 31,0 mm | 0 Satin nickel plated | 0 Standard |
| F Freewheeling cam | 36 mm | 36,0 mm | 1 Polished nickel plated | 1 Drill protection |
| M Cog wheel cam | 41 mm | 41,0 mm | 2 Polished brass | |
| | 46 mm | 46,0 mm | 3 Satin chrome plated | |
| | 51 mm | 51,0 mm | 4 Polished chrome plated | |
| | 56 mm | 56,0 mm | 5 Black | |
| | 61 mm | 61,0 mm | 6 Antique | |
| | 66 mm | 66,0 mm | 7 Bronzed | |
| | 71 mm | 71,0 mm | 8 Chemically nickel plated | |
| | 76 mm | 76,0 mm | | |
| | 81 mm | 81,0 mm | | |