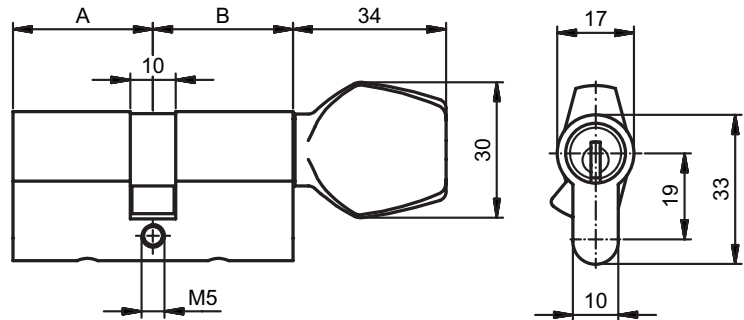


81150

Thumbturn cylinder PZ



Product profile

For mortise locks and surface-mounted locks of all types, especially suited for hospitals, retirement and nursing homes, hotels, etc.

Standard version

Satin nickel plated brass

Scope of supply

- 1 Fixing screw 81540.75

Important note

Drill protection class «D» according to EN 1303: 2015

81150 • 1 • 2 • 3 • 4 • 5 • 6 • 7

1 Version	2 Length A	3 Length B	4 Colour A 5 Colour B	6 Security	7 Thumbturn
S Standard cam	31 mm	31,0 mm	0 Satin nickel plated	0 Standard	0 Glutz design
F Freewheeling cam	36 mm	36,0 mm	1 Polished nickel plated	1 Drill protection	1 Round
M Cog wheel cam	41 mm	41,0 mm	2 Polished brass		
	46 mm	46,0 mm	3 Satin chrome plated		
	51 mm	51,0 mm	4 Polished chrome plated		
	56 mm	56,0 mm	5 Black		
	61 mm	61,0 mm	6 Antique		
	66 mm	66,0 mm	7 Bronzed		
	71 mm	71,0 mm	8 Chemically nickel plated		
	76 mm	76,0 mm			
	81 mm	81,0 mm			