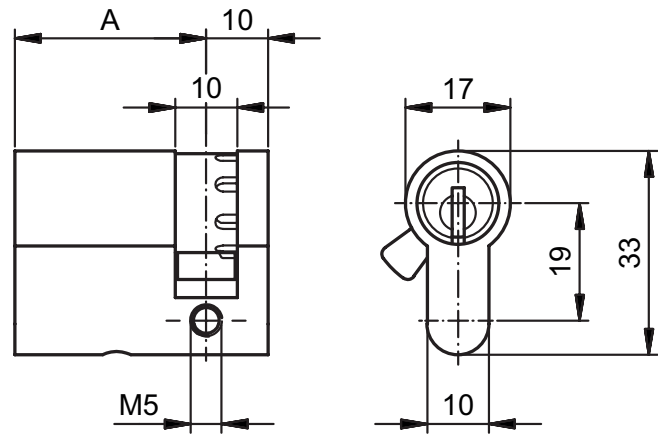


81175

Half cylinder PZ



Product profile

for mortise locks and surface-mounted locks of all types

Standard version

Satin nickel plated brass

Follower (S) reversible 8 x 45°

Scope of supply

- 1 Fixing screw 81540.75

Important note

Drill protection class «D» according to EN 1303: 2015

81175 · ① · ② · ③ · ④

① Version	② Length A	③ Colour A	④ Security
S Standard cam	31 mm	0 Satin nickel plated	0 Standard
F Freewheeling cam	36 mm	1 Polished nickel plated	1 Drill protection
L Follower freewheeling 270°	41 mm	2 Polished brass	
T Follower freewheeling 90°	46 mm	3 Satin chrome plated	
	51 mm	4 Polished chrome plated	
	56 mm	5 Black	
	61 mm	6 Antique	
	66 mm	7 Bronzed	
	71 mm	8 Chemically nickel plated	
	76 mm		
	81 mm		