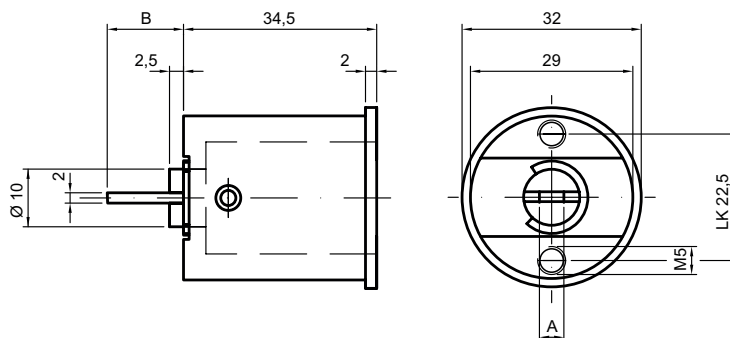


## 81233

### Switch cylinders



#### Product profile

for rotary switches from various manufacturers

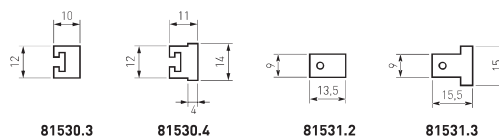
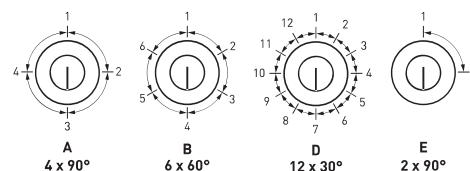
Switching angle of the cylinder and switch must be identical

#### Standard version

Satin nickel plated brass cylinder

Key removable in four positions

Tail piece 81531.2 galvanised steel



#### 81233 · ① · ② · ③

① Removal position	② Tail pieces	③ Colour A
<b>S 1 x 360°</b>	<b>0 Standard</b>	<b>0 Satin nickel plated</b>
<b>A 4 x 90°</b>	<b>1 81531.0</b>	<b>1 Polished nickel plated</b>
<b>B 6 x 60°</b>	<b>2 81531.1</b>	<b>2 Polished brass</b>
<b>C 8 x 45°</b>	<b>3 81531.3</b>	<b>3 Satin chrome plated</b>
<b>D 12 x 30°</b>		<b>4 Polished chrome plated</b>
		<b>5 Black</b>
		<b>6 Antique</b>
		<b>7 Bronzed</b>
		<b>8 Chemically nickel plated</b>