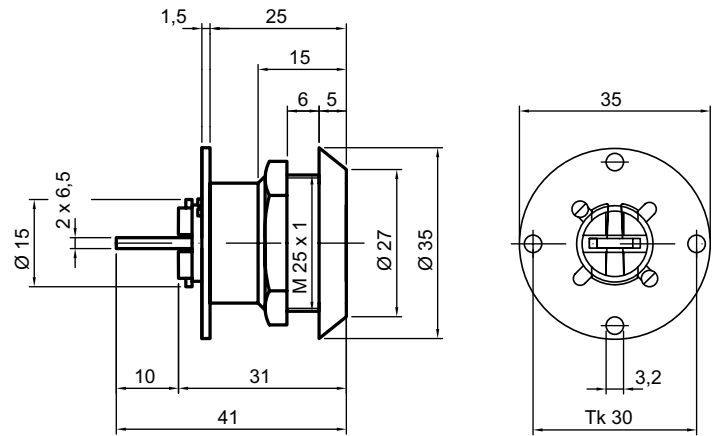


81235 Switch cylinders



Product profile

for installation in switch panels

Standard version

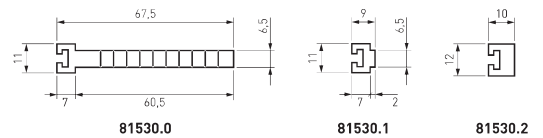
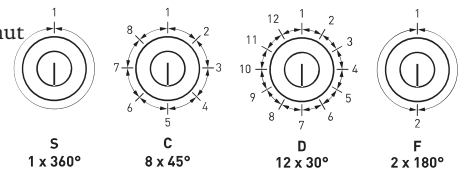
Satin nickel plated brass

Key removable in one position

Plate and Tail piece 81530.5 galvanised steel

Scope of supply

• 1 M25 x 1 fixing nut



81235 · ① · ② · ③

① Removal position

- S 1 x 360°
- A 4 x 90°
- E 2 x 90°
- F 4 x 180°

② Tail pieces

- 0 Standard
- 1 81530.0
- 2 81530.1
- 3 81530.2
- 4 81530.3
- 5 81530.4

③ Colour A

- 0 Satin nickel plated
- 1 Polished nickel plated
- 2 Polished brass
- 3 Satin chrome plated
- 4 Polished chrome plated
- 5 Black
- 6 Antique
- 7 Bronzed
- 8 Chemically nickel plated