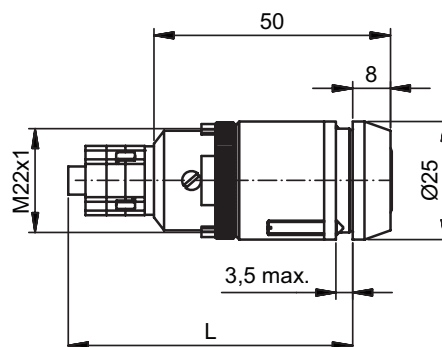


81242

Switch cylinders



Product profile

for installation in switch panels

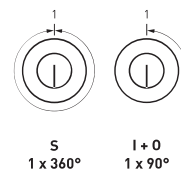
Standard version

Satin nickel plated brass cylinder

Anodised aluminium housing

Key removable in one position

2 switch elements



81242 · ① · ②

① Removal position

② Switch elements

S 1 x 360°

01 1

I Momentary

02 2

O 1x90° without spring return

03 3

04 4