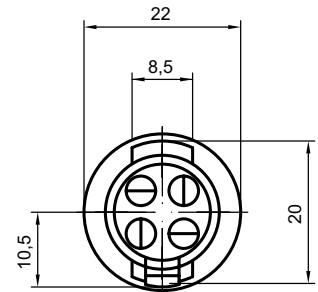
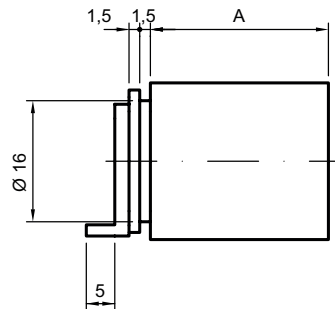


81620

Rotary cylinder



Product profile

for all types of mortise and roller blind locks

Scope of supply

- 1 Cam 81532.04 installed

Standard version

Satin nickel plated brass

Cylinder length 25 mm

Locking takes place automatically by turning the cylinder. Removal of the cylinder from the lock is only possible with the key inserted and the release pin

81620 · ① · ② · ③

① Length	② Follower	③ Colour A
25 mm	00 Standard	0 Satin nickel plated
30 mm	01 81532.00	
35 mm	02 81532.01	1 Polished nickel plated
40 mm	03 81532.02	2 Polished brass
45 mm	04 81532.03	3 Satin chrome plated
50 mm	05 81532.05	4 Polished chrome plated
55 mm	06 81532.06	5 Black
60 mm	07 81532.07	6 Antique
	08 81532.08	7 Bronzed
	09 81532.09	8 Chemically nickel plated
	10 81532.10	
	11 81532.11	