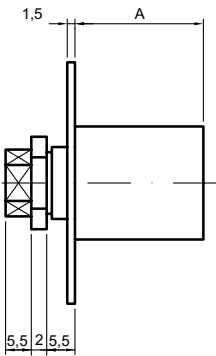
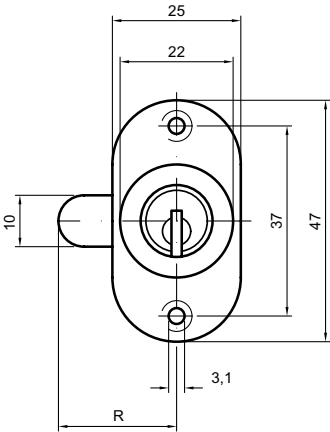




81800

Locking cylinder (bolt assembly with nuts)

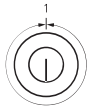


Product profile

for cabinets, drawers, office furniture, etc.

Standard version

Satin nickel plated brass cylinder
Fixing plate 81505.0, nickel plated steel
Bolt 81520.1 R = 30 mm, nickel plated steel
90° locking movement
Screw-on cylinder 81635 / 25 right-handed rotation (as illustrated)
Key only removable in one closed position (S)



S
1 x 360°

81800 • 1 • 2 • 3 • 4 • 5

| 1 Version | 2 Removal position | 3 Length | 4 Bolt length | 5 Colour A |
|---------------------------|--------------------|----------|---------------|----------------------------|
| 6 Right-handed, vertical | S 1 x 360° | 25 mm | 20 mm | 0 Satin nickel plated |
| 7 Left-handed vertical | | 30 mm | 25 mm | 1 Polished nickel plated |
| 8 Right-handed horizontal | | 35 mm | 30 mm | 2 Polished brass |
| 9 Left-handed horizontal | | 40 mm | 35 mm | 3 Satin chrome plated |
| | | 45 mm | | 4 Polished chrome plated |
| | | 50 mm | | 5 Black |
| | | | | 6 Antique |
| | | | | 7 Bronzed |
| | | | | 8 Chemically nickel plated |