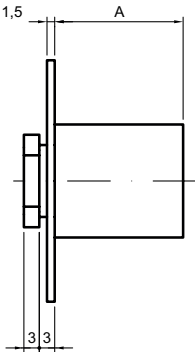
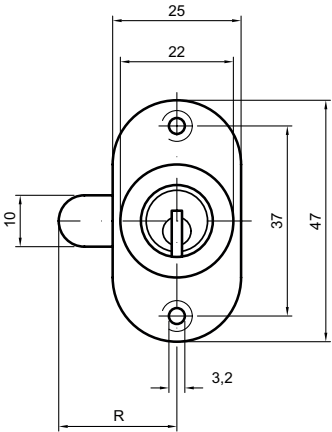




81801

Locking cylinder (bolt assembly with screws)



Product profile

for cabinets, drawers, office furniture, etc.

Standard version

Satin nickel plated brass cylinder

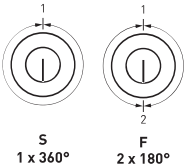
Fixing plate 81505.0, nickel plated steel

Bolt 81521.1 R = 30 mm, nickel plated steel

90° locking movement

Screw-on cylinder 81616 / 25 right-handed rotation (as illustrated)

Key only removable in one closed position (S)



81801 • 1 • 2 • 3 • 4 • 5

1 Version	2 Removal position	3 Length	4 Bolt length	5 Colour A
6 Right-handed, vertical	S 1 x 360° E 2 x 90°	25 mm 30 mm 35 mm 40 mm 45 mm 50 mm 55 mm 60 mm	25 mm 30 mm 35 mm	0 Satin nickel plated 1 Polished nickel plated 2 Polished brass 3 Satin chrome plated 4 Polished chrome plated 5 Black 6 Antique 7 Bronzed 8 Chemically nickel plated