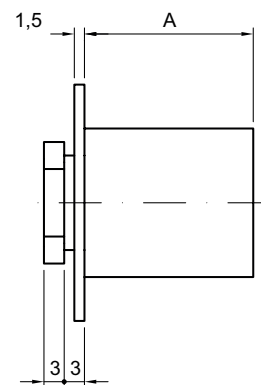
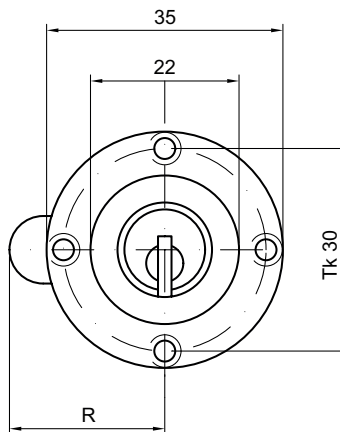


## 81811

### Locking cylinder (bolt assembly with screws)



#### Product profile

for cabinets, drawers, office furniture, etc.

#### Standard version

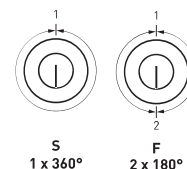
Satin nickel plated brass cylinder

Fixing plate 81505.2, nickel plated steel

Bolt 81521.1 R = 30 mm, nickel plated steel

90° locking movement

Screw-on cylinder 81635 / 25 right-handed rotation (as illustrated)



#### 81811 • ① • ② • ③ • ④ • ⑤

① Version	② Removal position	③ Length	④ Bolt length	⑤ Colour A
<b>6 Right-handed, vertical</b>	<b>S</b> 1 x 360°	<b>25 mm</b>	<b>25 mm</b>	<b>0</b> Satin nickel plated
<b>7 Left-handed vertical</b>	<b>E</b> 2 x 90°	<b>30 mm</b>	<b>30 mm</b>	<b>1</b> Polished nickel plated
<b>8 Right-handed horizontal</b>		<b>35 mm</b>	<b>35 mm</b>	<b>2</b> Polished brass
<b>9 Left-handed horizontal</b>		<b>40 mm</b>		<b>3</b> Satin chrome plated
		<b>45 mm</b>		<b>4</b> Polished chrome plated
		<b>50 mm</b>		<b>5</b> Black
		<b>55 mm</b>		<b>6</b> Antique
		<b>60 mm</b>		<b>7</b> Bronzed
				<b>8</b> Chemically nickel plated