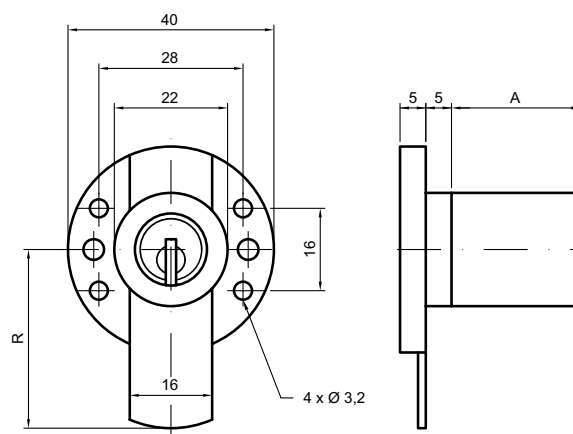


# 81820

## Central locking cylinder



### Product profile

for desks, substations, etc.

### Standard version

Satin nickel plated brass cylinder and base plate

Nickel plated steel bolt

1-rotation lock, stroke 13 mm

Mounting cylinder 81615 / length 25mm

### Scope of supply

- 1 Mounting rose 81567

### 81820 · ① · ② · ③ · ④

① Version	② Bolt length	③ Length	④ Colour A
<b>S</b> Standard	<b>06</b> 600 mm	<b>25 mm</b>	<b>0</b> Satin nickel plated
<b>U</b> reversible	<b>07</b> 700 mm	<b>30 mm</b>	<b>1</b> Polished nickel plated
<b>M</b> Bolt protruding on both sides, downward movement	<b>10</b> 1000 mm	<b>35 mm</b>	<b>2</b> Polished brass
		<b>40 mm</b>	<b>3</b> Satin chrome plated
		<b>45 mm</b>	<b>4</b> Polished chrome plated
		<b>50 mm</b>	<b>5</b> Black
		<b>55 mm</b>	<b>6</b> antique
		<b>60 mm</b>	<b>7</b> Bronzed
			<b>8</b> Chemically nickel plated