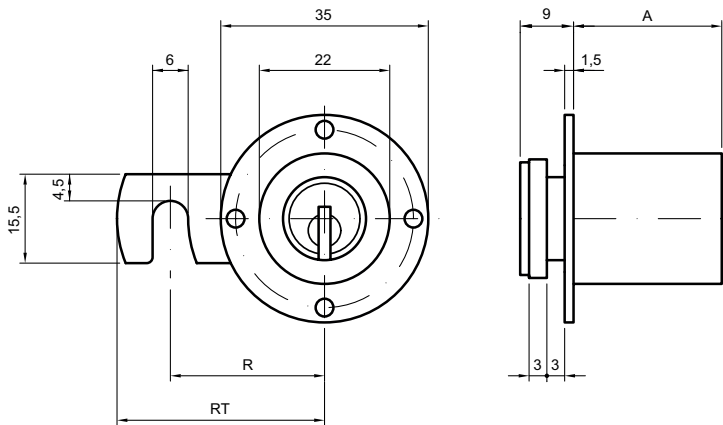
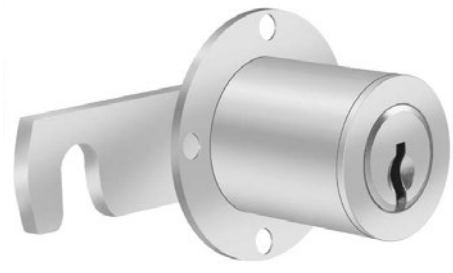




81850

Central locking cylinder



Product profile
for all types of furniture

Standard version
Satin nickel plated brass cylinder
Fixing plate 81506.2, nickel plated steel
Nickel plated steel bolt
Cam lever movement 90°
Key rotation 360°
Mounting cylinder 81615/25
Cam lever R = 31 mm, RT = 40 mm
right-handed rotation (as illustrated)

81850 • 1 • 2 • 3 • 4 • 5

1 Version	2 Length	3 Fixing plate	4 Bolt	5 Colour A
0 Right	25 mm	00 Standard	xxxx according to the table	0 Satin nickel plated
1 Left	30 mm	01 81506.0		1 Polished nickel plated
2 Top	35 mm	02 81506.1		2 Polished brass
3 Bottom	40 mm	03 81506.3		3 Satin chrome plated
	45 mm			4 Polished chrome plated
	50 mm			5 Black
	55 mm			6 Antique
	60 mm			7 Bronzed
				8 Chemically nickel plated