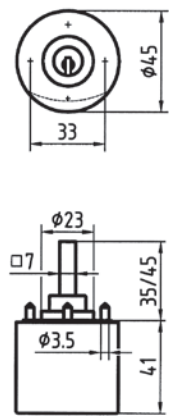
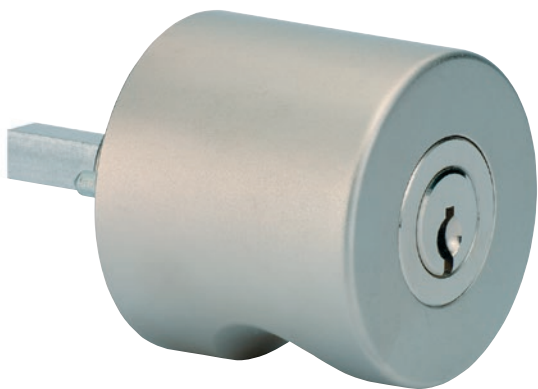


81993  
Lockable turns



**Product profile**  
for cabinet doors

**Standard version**  
Satin nickel plated brass cylinder  
Satin nickel zinc die cast housing  
Square spindle 7 x 7 mm unfinished aluminium  
Spindle length 33 mm from rose  
Right-handed lock rotation

**Options**  
without cylinder, blank turn 81994

**Scope of supply**  
• 1 x Sheet metal screw

81993 • 1 • 2 • 3 • 4

1 Version	2 Spindle	3 Rose	4 Housing colour
0 Right	33 mm	0 Standard	0 Satin nickel plated
1 Left	43 mm	2 3087	1 brushed nickel plated
	53 mm		
	63 mm		