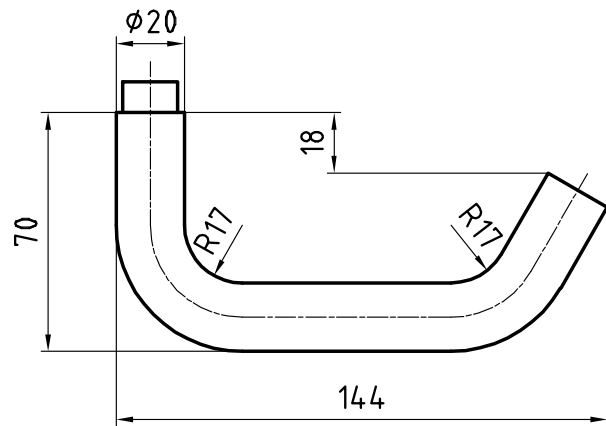


5098 Olten Stainless steel lever handle



Picture shows handle with 5620C rose

Product profile

Commercial buildings, administrative centres and superior quality residential developments

16 mm guide for Glutz twin glide

Category of use class 4, EN 1906: 2002-05

Standard version

Lever handle Length: 144 mm, Ø 20 mm

Projection: 70 mm

Square spindle 8 mm

Satin stainless steel

16 mm guide for Glutz glide / easyfix

Options

Polished stainless steel

RAL lacquered

PVD lacquered

Square spindle 8,5 mm or 9 mm

5098 · ① · ② · ③ · ④ · ⑤ · ⑥

| ① 1021_Ausführung | ② Guide | ③ 1020_Vierkant | ④ 1022_Stiftlänge | ⑤ 1312_Material Vierkant | ⑥ Surface |
|-------------------|---------|-----------------|-------------------|--------------------------|-----------------------------|
| 00 Lochteil | 0 glide | 80 8 mm | 00 00 | 0 ohne Vierkant | 00 Stainless steel matt |
| 10 Stiftteil | 1 twin | 85 8,5 mm | 06 84 mm | 1 Stahl verzinkt | 11 Stainless steel polished |
| 50 Paar | | 90 9 mm | 12 109 mm | 2 Edelstahl | 44 Antibacterial |
| | | | 99 Auf Anfrage | | 51 RAL 9005 black matt |
| | | | | | 99 On request |