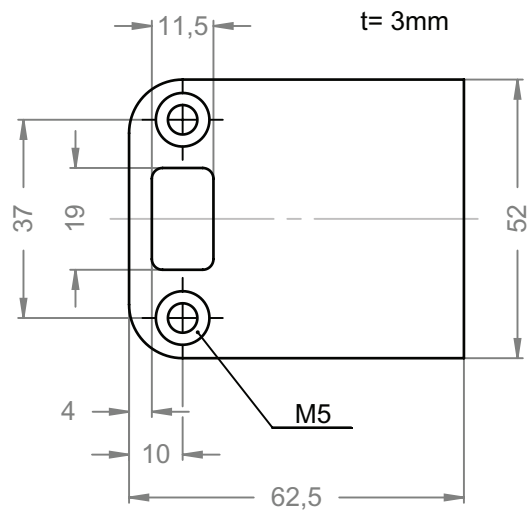


## 13822

**Bolt striking plate**



### Product profile

Striking plate for latch for automatic locking  
 Flat striking plate for rebated doors  
 Flanged striking plate for square-edged doors

### Standard version

Satin stainless steel  
 For left and right hand use  
 For mortise  
 Conforms to EN 1125 and EN 179  
 Suitable for fire doors