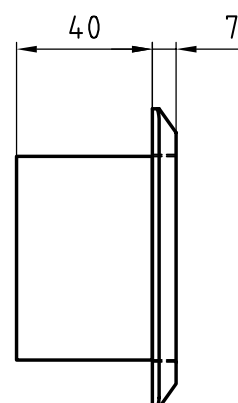
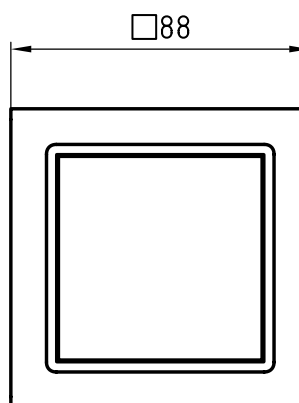


82153 Control unit RFID/Code IP40

Glutz Access control unit



Product profile

RFID/code access control reader for indoor use.

The Glutz control units are designed in the attractive Feller EDIZIOdue design and can be combined with all switches, socket outlets and frames from the Feller range. The control units can be surface-mounted or flush-mounted.

Standard version

- RFID/code wall reader light grey flush-mounted (flush-mounted) with 12 buttons
- 4 status LEDs
- Buzzer
- EM 4450 (compatible with Eypos products)
- Mounting set Feller 1x

Options

- Colour options control unit: white, light grey.
- Colour options frame: white, light grey, black, chrome-brushed.
Further colours according to Feller EDIZIOdue incl. Prestige Design.
- RFID technologies: EM 4102, EM 4450, LEGIC prime, LEGIC advant
- Version for outdoor use NUP IP55
- Surface mounting
- Cable and max. cable length on request