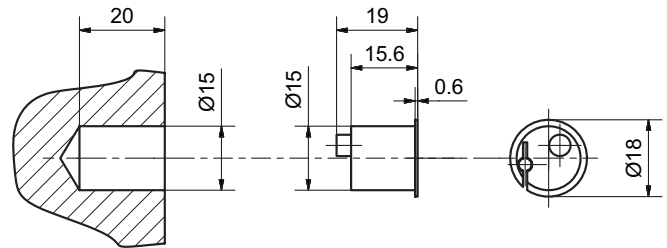
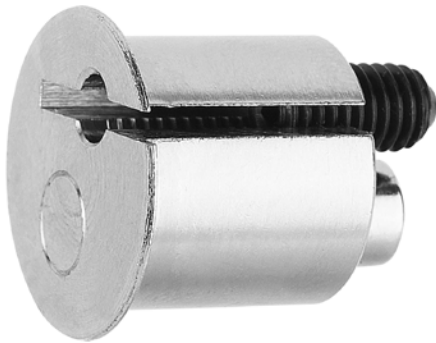


11140 Door monitoring magnet

Ø15x19, Permanent magnet, orientation adjustable



Product profile

Easy to install door monitoring magnet (permanent magnet) with integrated, eccentric adjustment function for precise orientation in the frame. The door monitoring magnet is absolutely necessary to be able to use the response (closed or open) of the locks with motorised opening of the MINT family.

Standard version

- Door monitoring magnet with permanent magnet
- Diameter: 15 mm (adjustable from Ø14.8-15.5 mm)
- Length: 19 mm (0.6 mm projecting)
- Eccentrically adjustable; circular marking of the position of the permanent magnet on the front
- Clamping with 2.5 mm hexagon socket
- Nickel plated brass