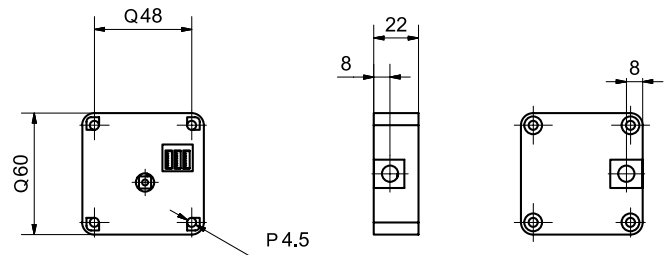


82500 E-Locker 13



Product profile

Electronic battery-operated furniture lock with integrated access control for 50 media. For locking of furniture doors/swing doors, drawers, sliding doors, cabinets, etc. RFID cards and key fobs are used for opening, reading range of up to 16 mm.

Standard version

- Battery-operated furniture lock
- Identification via RFID (ISO 14443A) Mifare and NFC
- Mounting on wood
- Scanning range
 - Glutz or third-party access card up to 16 mm
 - Automated teller machine card, credit card (NFC) up to 10 mm
 - Glutz G-Line Clip or third-party key fob between 5 and 10 mm
- Dimensions: 60 x 60 x 22 mm
- Hole spacing distance: 48 mm
- Maximum counter pressure: 2.5 kg
- Breaking load: 120 kg
- Housing: black plastic
- Temperature: 2 – 40 °C
- For interior rooms only
- Battery service life 20,000 cycles / 2 years

Options

- Function: Fitness studio
- Locking accessory
-

Scope of supply

- 1x E-Locker 13
- 1x lithium battery 3 V
- 1x sticker with RFID symbol to indicate external position

Important note

Card programming only