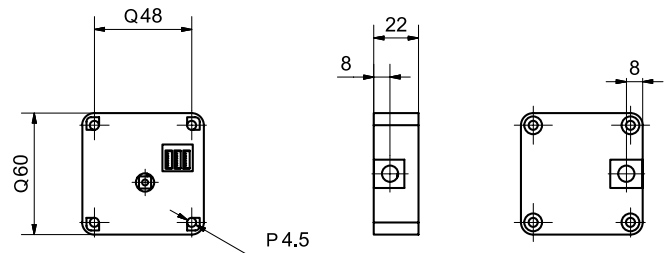


## 82505 E-Locker 13

with external antenna



### Product profile

Electronic battery-operated furniture lock with integrated access control for 50 media devices. For locking of furniture doors/swing doors, drawers, sliding doors, glass cabinets, etc. RFID cards and key fobs are used for unlocking, reading range of up to 16mm

### Standard version

- Battery-operated furniture lock with external antenna
- Identification via RFID (ISO 14443A) Mifare and NFC
- Installation on wood or in metal cabinets (with metal kit)
- Scanning range
- Glutz or third+party access card up to 16 mm
- Bank card, credit card (NFC) up to 10 mm
- Glutz G-Line Clip or third-party key fob between 5 and 10 mm
- Dimensions: 60 x 60 x 22 mm
- Fixing centres: 48 mm
- Maximum opposing force: 2.5 kg
- Breaking strength: 120 kg
- Housing: black plastic
- Temperature range: 2 – 40 °C
- For indoor applications only
- Battery life 20,000 cycles / 2 years

### Options

- Function: Fitness studio
- Locking element accessory

### Scope of supply

- 1 x sticker with RFID symbol for exterior position indication
- 1 x 3V lithium battery
- 1 x E-Locker 13

### Important note

Card programming only