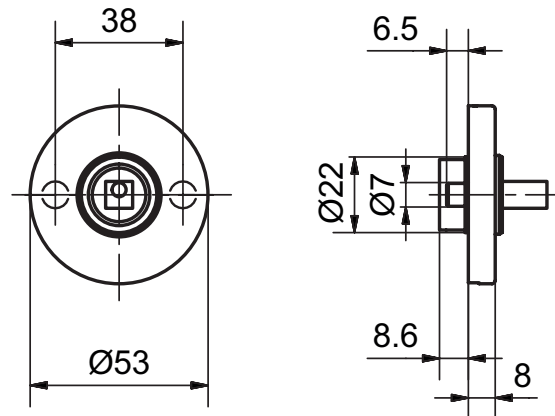


## 51029C

Rosette for one-sided or double-sided knob fixing



Knob 5827



### Product profile

Rosette for one-sided or double-sided knob fixing, for doors with thermal requirements, swinging and sliding doors.  
Can be combined with all Glutz knobs.

### Standard version

Clip on rose  
Ø 53 mm  
Projection: 8 mm  
Satin stainless steel  
Square spindle 8 mm  
Base plate with guided cams M4 CN  
Fixing centres 38 mm

### Options

Polished stainless steel  
Without cams  
Base plate with guided cams M5 CN  
Back to back fixing in pairs:  
Base plate on one side with threaded cams M4 / M5 CG  
Base plate on one side with guided cams M4 / M5 CN