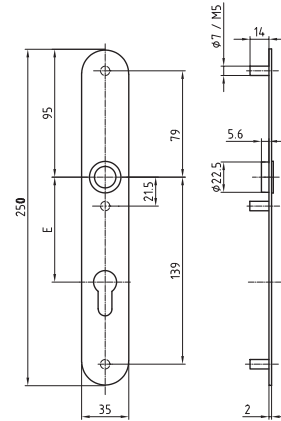


5359

Stainless steel metal frame long plate



Standard version

Satin stainless steel

Length: 250 mm

Width: 35 mm

Projection: 2 mm

16 mm guide: Glutz glide inwards

Glutz easyfix

With 3 fixing holes M5

5359 · 1 · 2 · 3 · 4 · 5 · 6 · 7

1 Execution

2 Guide

3 Mounting
fixe | FEHO

4 Guide sleeve

5 Cutout

6 Centres

7 Surface

2 Piece | thread cams

8 Stück | Befestigungslöcher

0 glide

2 Buttonhole

4 twin glide auswärts

9 blind

0 ohne
1 easyfix

5 5 pieces

6 3 x M6

00 without*

02 RZ

03 PZ

08 PRZ

00 ohne

72 72 mm

74 74 mm

78 78 mm

88 88 mm

92 92 mm

94 94 mm

00 Stainless steel matt

11 Stainless steel polished

44 Antibacterial

51 RAL 9005 black matt

99 On request