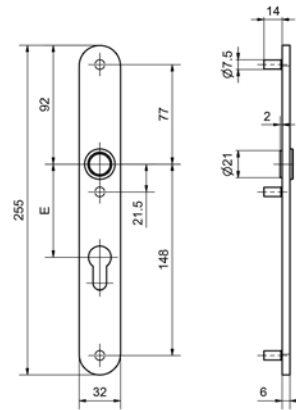


## 5361

### Stainless steel metal frame long plate



#### Standard version

Length: 255 mm

Width: 32 mm

Projection: 6 mm

Satin stainless steel

16 mm guide with Glutz glide outside

Glutz easyfix

With three M5 threaded cams

RZ: 74 mm, 78 mm, 94 mm

PZ: 72 mm, 78 mm, 92 mm

16 mm outside, conical

16 mm twin, inside

16 mm twin, semi-outside

16 mm twin, outside

16 mm twin, outside, conical

Knob fixing

#### Cutout

5361.00 blind

5361.0 blank

5361.1 BB standard keyhole

5361.2 RZ round cylinder

5361.3 PZ Profile: cylinder

5361.8 PRZ

5361.9 OVZ oval cylinder

#### Options

Polished stainless steel

RAL lacquered or PVD lacquered

16 mm outside