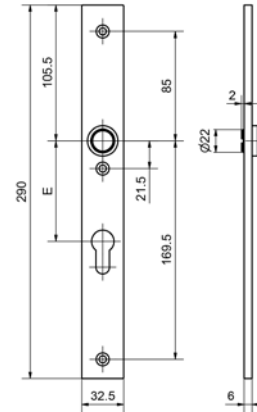


## 52191

### Stainless steel metal frame long plate



#### Product profile

Interior plate with spring loaded lever handle,  
fixed mobile mounting and delivered as half-fitting.  
Specify DIN left hand or DIN right hand version

#### Standard version

Satin stainless steel  
Length: 290 mm  
Width: 32,5 mm  
Projection: 6 mm  
16 mm guide: Glutz glide inwards  
With 3 fixing holes M5

#### Cutout

52191.0 blank  
52191.2 RZ Distances (E): 74 mm, 78 mm, 94 mm  
52191.3 PZ Distances (E): 72 mm, 78 mm, 92 mm  
52191.4 WC with thumbturn for 7 mm spindle

#### Options

Polished stainless steel  
RAL lacquered  
PVD lacquered