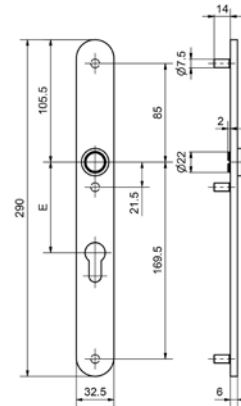


52194

Stainless steel metal frame long plate



Product profile

Exterior plate with spring loaded lever handle,
fixed mobile mounting and delivered as half-fitting
Specify DIN left hand or DIN right hand version

Standard version

Length: 290 mm
Width: 32,5 mm
Projection: 6 mm
Satin stainless steel
16 mm guide Glutz glide inwards
With 3 threaded cam M5

52194 · ① · ② · ③ · ④ · ⑤ · ⑥ · ⑦

① Execution

② Guide

③ 1250_Druckerform Beschlag
Halbgarnitur mit FEHO

④ Orientation

⑤ Cutout

⑥ Centres

⑦ Surface

2 Piece | thread cams

0 drehbarfest

31 5059 (Oslo)
32 5072 (Memphis)
33 50661 (Savannah | EN 179)
36 5038V (Lugano | EN 179)
38 50041 (Merkur | EN 179)
40 50070 (Appenzell)
41 50071 (Appenzell | EN 179)
42 50072 (Appenzell)
43 50073 (Appenzell | EN 179)
50 50060 (Genève)
51 50061 (Genève | EN 179)
60 5089 (Assoluto)
61 50921 (München | EN 179)
62 6046 (Cham | EN 179)

L Links
R Rechts

00 without
02 RZ
03 PZ

00 ohne
72 72 mm
74 74 mm
78 78 mm
88 88 mm
92 92 mm
94 94 mm

00 Stainless steel matt
11 Stainless steel polished
44 Antibacterial
51 RAL 9005 black matt
99 On request