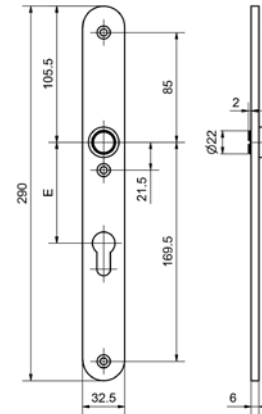


52195

Stainless steel metal frame long plate



Product profile

Interior plate with spring loaded lever handle, fixed mobile mounting and delivered as half-fitting. Specify DIN left hand or DIN right hand version

Standard version

Satin stainless steel
 Length: 290 mm
 Width: 32,5 mm
 Projection: 6 mm
 16 mm guide: Glutz glide inwards
 With 3 fixing holes M5

52195 · 1 · 2 · 3 · 4 · 5 · 6 · 7

1 Execution

2 Guide

3 1250_Druckerform Beschlag
 Halbgarnitur mit FEHO

4 Orientation

5 Cutout

6 Centres

7 Surface

8 Einzel | Befestigungslöcher

0 drehbarfest

31 5059 (Oslo)
 32 5072 (Memphis)
 33 50661 (Savannah | EN 179)
 36 5038V (Lugano | EN 179)
 38 50041 (Merkur | EN 179)
 40 50070 (Appenzell)
 41 50071 (Appenzell | EN 179)
 42 50072 (Appenzell)
 43 50073 (Appenzell | EN 179)
 50 50060 (Genève)
 51 50061 (Genève | EN 179)
 60 5089 (Assoluto)
 61 50921 (München | EN 179)
 62 6046 (Cham | EN 179)

L Links
 R Rechts

00 without
 02 RZ
 03 PZ

00 ohne
 72 72 mm
 74 74 mm
 78 78 mm
 88 88 mm
 92 92 mm
 94 94 mm

00 Stainless steel matt
 11 Stainless steel polished
 44 Antibacterial
 51 RAL 9005 black matt
 99 On request