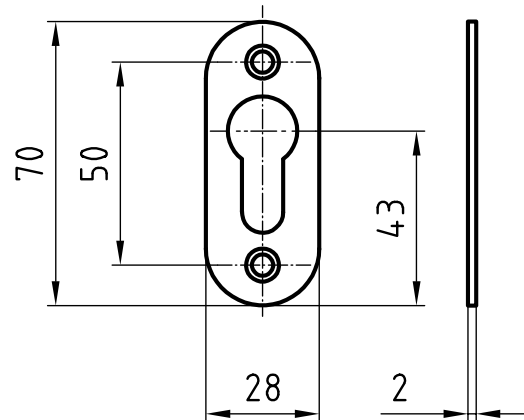


## 5392

Stainless steel metal frame cylinder escutcheon



### Standard version

Length: 70 mm  
Width: 28 mm  
Projection: 2 mm  
Satin stainless steel  
Fixing centres 50 mm  
With fixing holes for M4

### Cutout

5392.0 blank  
5392.1 BB standard keyhole  
5392.2 RZ round cylinder  
5392.3 PZ Profile: cylinder  
5392.8 PRZ  
5392.9 OVZ oval cylinder

### Options

Polished stainless steel  
RAL lacquered  
PVD lacquered