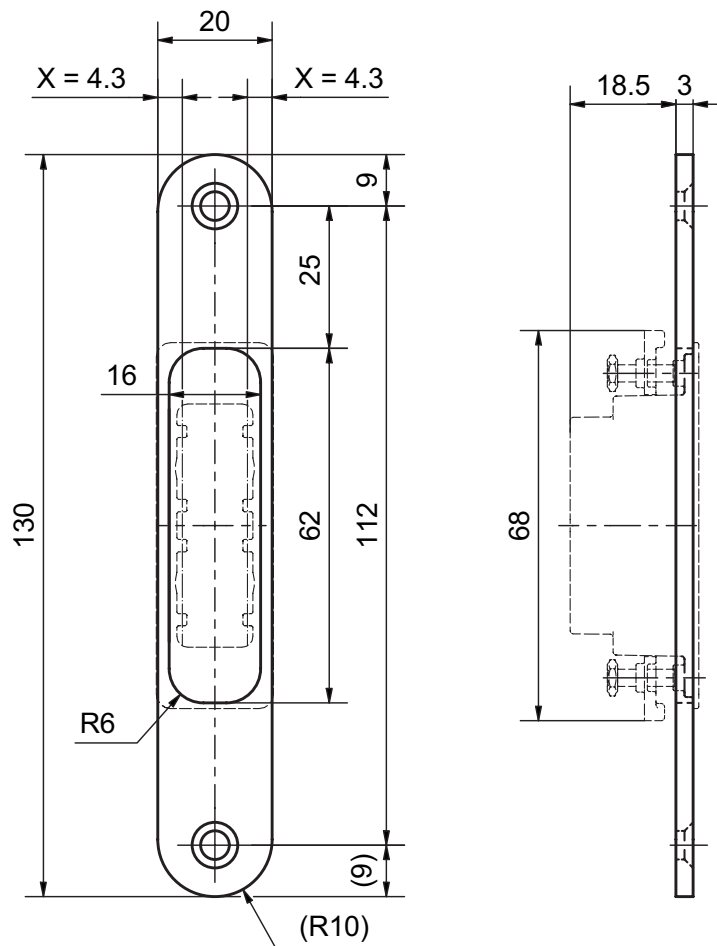


22820 Flat striking plate 20 mm

for 24110 Mortise lock with magnetic latch



Product profile

Flat striking plate in stainless steel for the 24110 Mortise lock with magnetic latch in combination with a wood frame. The magnetic latch holder, which is delivered with the lock, is simply mounted into the striking plate from the front and tightened using the special blind screws. The magnetic force is adjusted via the depth adjustment in the magnetic latch holder.

Standard version

- X-Dimension (X-Mass): 4.3 mm
- Distance: -
- Width: 20 mm
- Length: 130 mm
- Depth: 3 mm
- DIN L and R
- Matt stainless steel
- Adjustable magnetic latch holder; Depth: ± 3 mm