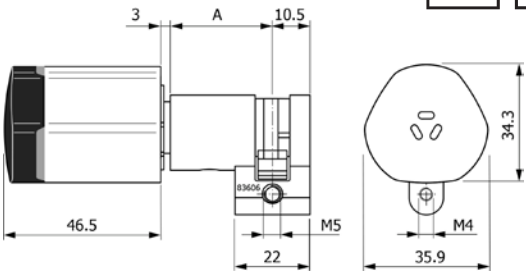
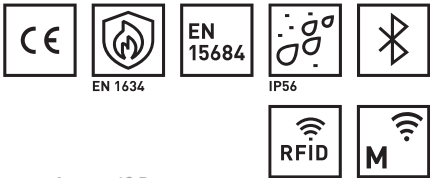


83606 E single cylinder
E / RZ



Product profile

Battery-powered electronic cylinder for internal and external doors. Opening and closing from the outside is done by contactless reading of the RFID medium or by the smartphone app and subsequent turning of the knob.

Standard version

- Exterior E knob with access control function and battery
- Identification via RFID Mifare DESfire EV1/2 (ISO 14443A)
- Programming via media, wireless access (868 MHz)
- Protection class: IP56, EN 15684, RC2
- Fire protection EN 1634-2: 90 min
- BLE-ready

Options

- High exterior drill protection (PT1), up to RC4 (with corresponding

door plate)

- Low temperature (LT) for operation below 0°C

Scope of supply

- 1 E single cylinder
- 1 battery
- 1 retaining screw M5x75
- 1 Quick Guide

Important note

- PT1 (drill protection) version only applicable for the external side

83606 · ① · ② · ③ · ④ · ⑤ · ⑥ · ⑦ · ⑧

① eAccess_Lenght A (External) II	② eAccess_Length B (Internal) II	③ eAccesses_Operating conditions	④ Security	⑤ Turn type	⑥ Version	⑦ eAccess_Finish	⑧ eAccess_Antenna colour
30,0 mm (Standard length)	00,0 Halbzylinder	0 Standard	0 Standard	0 Digital knob	S Standard	0 Matt nickel	0 Black
35,0 mm		1 Low temperature (LT)	2 PT1		M Cog 10	2 Polished chrome	1 White
40,0 mm						3 Matt chrome	
45,0 mm						5 Black	
50,0 mm						7 Bronze effect	
55,0 mm							
60,0 mm							
65,0 mm							
70,0 mm							
75,0 mm							
... ..							
110,0 mm							