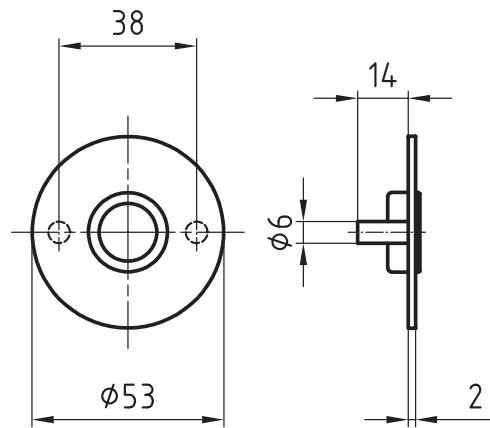


## 5628

Stainless steel rose



### Standard version

Ø 53 mm

Projection: 2 mm

Satin stainless steel

16 mm guide: Glutz glide inwards

With 2 M4 threaded cams

Fixing centres 38 mm

### Options

Polished stainless steel

RAL lacquered

PVD lacquered

16 mm outside, conical

16 mm twin, inside

16 mm twin, semi-outside

16 mm twin, outside

Glutz easyfix

Knob fixing