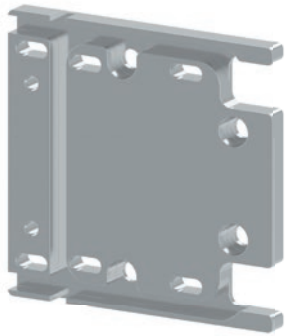


# 82576 Assembly kit for compartment lock

fits only compartment lock (82572)



## Product profile

Installation kit for the compartment lock enables stable and protective installation on wooden surfaces. The plate is made of aluminum. The cable notches in the mounting plate enable cable-friendly installation of the compartment lock (when connected to an external control unit) in various positions without bending cables or pressing them in.

## Scope of supply

- 1x assembly plate (aluminum)
- 4x screws K50x20
- 2x screws K40x12

## Important note

The compartment lock (82572) has to be ordered separately !