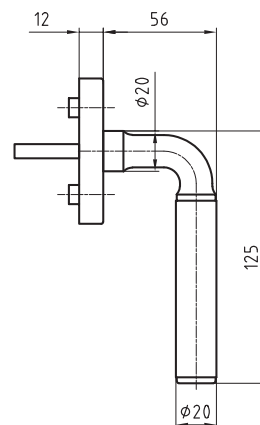
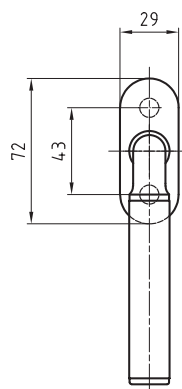


5067/5616 CF Prestige Basle

Die cast Zinc window handle for tilt and turn systems



Product profile

The product range 'Basle' was created in cooperation with the architects Diener & Diener. The range comprises the 5067 for domestic accommodation, and the slightly larger 5267 for commercial buildings. With their stainless steel chassis, the 5087 and 5287 form a high-quality complement to this model.

Standard version

Window handle 125 mm, Ø 20 mm
Satin nickered ZNmn shoulder
Satin stainless steel tube
4 x 90° ball stop
Left / right applicable
Square spindle 7 x 38 mm
Clip on rose CRNI satin finish 5616 CF
72 x 29 x 12 mm
Projection: 68 mm
Fixing centres 43 mm
Studs Ø 9,5 / 12 mm
Suitable for all tilt and turn systems

Options

Length: of square spindle 7 x 24, 26, 32, 35, 40 mm (other spindle
Lengths: upon request)
Also available as a pair
Polished stainless steel shoulder

Tubes available in:

Polished stainless steel
Stainless steel PVD-coated, brass coloured
Stainless steel RAL-coated, in acc. with colour chart