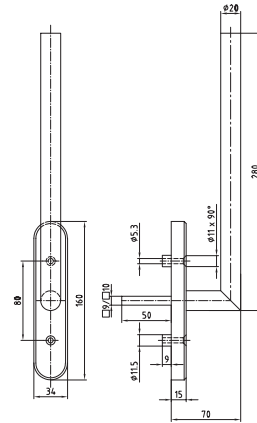


**Stainless steel handle PSK + HST with ball stop**



For parallel sliding doors with tilt system and normal sliding doors.

Projection: 70 mm

Fixing centres 80 mm

1 Raster	2 Square spindle	3 Fastening	4 Cutout   Height	5 Surface
1 4 x 90°	1 10 x 40 mm	5 M5	0 blind   160 mm	00 Stainless steel matt
2 2 x 180°	2 10 x 50 mm	6 M6	1 blind   188 mm	11 Stainless steel polished
	3 10 x 65 mm		2 RZ 70 mm   188 mm	44 Antibacterial
			3 PZ 69 mm   188 mm	51 RAL 9005 black matt
				99 On request