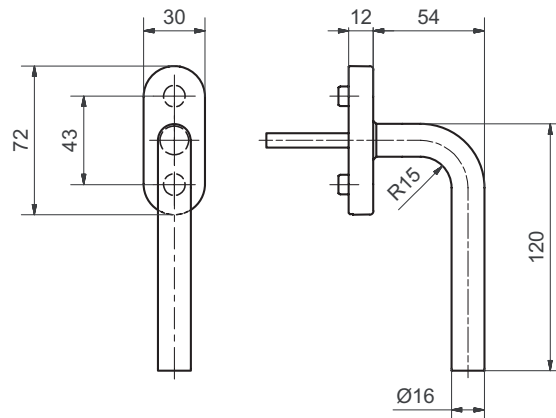


33005/51001 CF

Stainless steel window handle



Product profile

Superior quality residential developments

Standard version

Satin stainless steel surface, Ø 16 mm

Handle length 120 mm

Handle projection 54 mm

Total projection 66 mm

4 x 90° ball stop

Square spindle 7 x 38 mm

Fixing centres 43 mm

Studs Ø 9.5/12 mm

Clip on rose 51001 CF round

Clip on rose 51002 CF square

72 x 29 x 12 mm

Important note

Fixed mobile mounting on rose, concealed screws

M5 screws must be ordered separately

33005/51001 CF · ① · ②

① Bolt length

24 24mm

26 26mm

32 32mm

35 35mm

38 38 mm

40 40mm

② Surface

00 Stainless steel matt

11 Stainless steel polished

44 Antibacterial

51 RAL 9005 black matt

99 On request