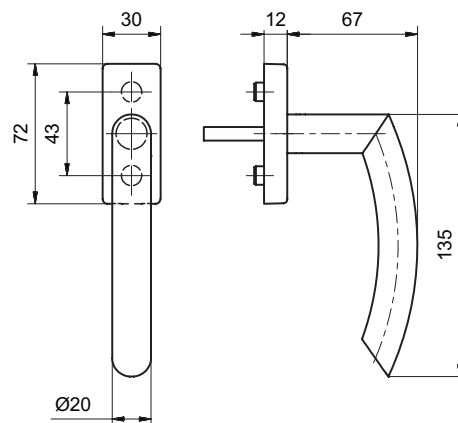


## 50002/51002 CF

### Stainless steel window handle



#### Product profile

Commercial buildings, administrative centres and superior quality residential developments

#### Standard version

Satin stainless steel surface, Ø 20 mm

Handle length 135 mm

Handle projection 67 mm

Total projection 79 mm

4 x 90° ball stop

Square spindle 7 x 38 mm

Fixing centres 43 mm

Studs Ø 9.5/12 mm

Clip-on rose 51002 CF angular

72 x 29 x 12 mm

#### Options

#### Important note

Fixed mobile mounting on rose, concealed screws

M5 screws must be ordered separately

#### 50002/51002 CF · ① · ②

##### ① Bolt length

**24** 24mm

**26** 26mm

**32** 32mm

**35** 35mm

**38** 38 mm

**40** 40mm

##### ② Surface

**00** Stainless steel matt

**11** Stainless steel polished

**44** Antibacterial

**51** RAL 9005 black matt

**99** On request