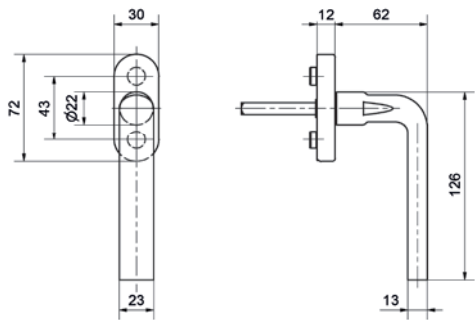


5040/5616 CF Mercury

Stainless steel window handle



Product profile

Commercial buildings, administrative centres and superior quality residential developments

Standard version

Satin stainless steel surface, Ø 22 mm
Handle length 126 mm
Handle projection 62 mm
Total projection 74 mm
4 x 90° ball stop
Square spindle 7 x 38 mm
Fixing centres 43 mm
Studs Ø 9.5/12 mm

Clip-on rose 5616 CF
72 x 29 x 12 mm

Important note

Fixed mobile mounting on rose, concealed screws
M5 screws must be ordered separately

5040/5616 CF · ① · ②

① Bolt length	② Surface
024 24mm	00 Stainless steel matt
026 26mm	11 Stainless steel polished
032 32mm	44 Antibacterial
035 35mm	51 RAL 9005 black matt
038 38 mm	73 PVD black
040 40mm	99 On request
099 On request	