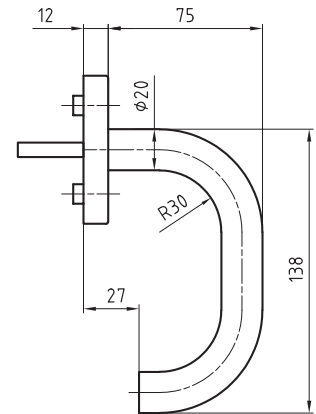
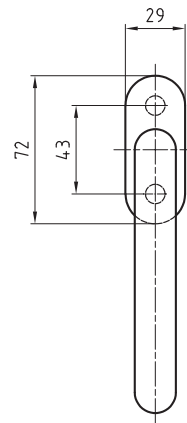


5054/5616 CF Uppsala

Stainless steel window handle



Product profile

Hospitals, commercial buildings, administrative centres

Standard version

Window handle 138 mm, Ø 20 mm

Satin stainless steel

4 x 90° ball stop

Left / right applicable

Square spindle 7 x 38 mm

Clip on rose 5616 CF

72 x 29 x 12 mm

Projection: 87 mm

Fixing centres 43 mm

Studs Ø 9,5 / 12 mm

Suitable for all tilt and turn systems

Options

Length: of square spindle 7 x 24, 26, 32, 35, 40 mm (other spindle

Lengths: upon request)

Polished stainless steel

RAL lacquered

Also available as a pair