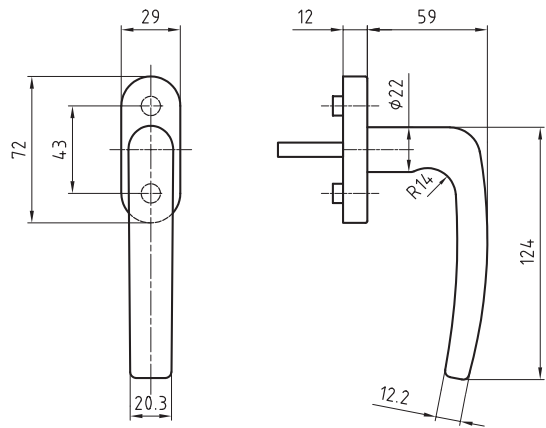


5060/5616 CF Zug

Stainless steel window handle



Product profile

Commercial buildings, administrative centres and superior quality residential developments

Standard version

Satin stainless steel surface, Ø 22 mm
Handle length 124 mm
Handle projection 59 mm
Total projection 71 mm
4 x 90° ball stop
Square spindle 7 x 38 mm
Fixing centres 43 mm
Studs Ø 9.5/12 mm

Clip-on rose 5616 CF
72 x 29 x 12 mm

Important note

Fixed mobile mounting on rose, concealed screws
M5 screws must be ordered separately

5060/5616 CF · ① · ②

① Bolt length	② Surface
24 24mm	00 Stainless steel matt
26 26mm	11 Stainless steel polished
32 32mm	44 Antibacterial
35 35mm	51 RAL 9005 black matt
38 38 mm	74 PVD Anthrazit
40 40mm	99 On request
99 On request	