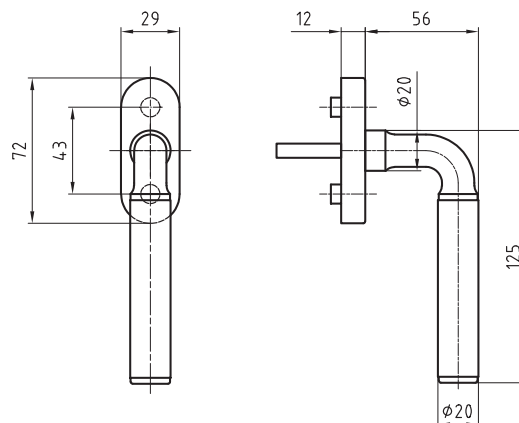


5087/5616 CF INOX Basle

Stainless steel window handle



Product profile

The classic one - new and nobler more than ever - Shoulder in solid stainless steel

Standard version

Satin stainless steel surface, $\phi 20$ mm

Handle length 125 mm

Handle projection 56 mm

Total projection 68 mm

4 x 90° ball stop

Square spindle 7 x 38 mm

Fixing centres 43 mm

Studs $\phi 9.5/12$ mm

Clip-on rose 5616 CF

72 x 29 x 12 mm

Important note

Fixed mobile mounting on rose, concealed screws

M5 screws must be ordered separately

5087/5616 CF · ① · ②

① Bolt length

24 24mm

26 26mm

32 32mm

35 35mm

38 38 mm

40 40mm

99 On request

② Surface

00 Stainless steel matt

11 Stainless steel polished

44 Antibacterial

51 RAL 9005 black matt

99 On request