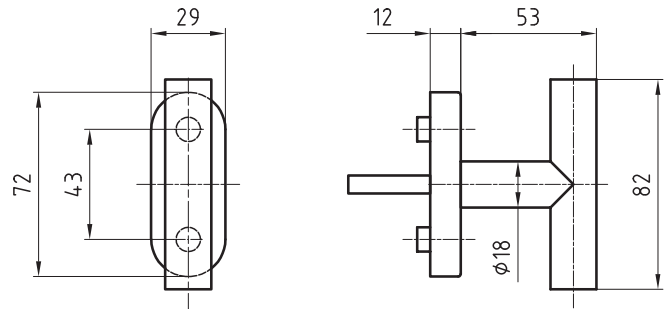


## 5715/5616 CF

### Stainless steel window turn



*Picture shows handle with 5618C rose*



#### Standard version

Window turn, Ø 18 mm  
Satin stainless steel  
4 x 90° ball stop  
Left / right applicable  
Square spindle 7 x 38 mm  
Clip on rose 5616 CF  
72 x 29 x 12 mm  
Projection: 65 mm  
Fixing centres 43 mm  
Studs Ø 9,5 / 12 mm  
Suitable for all tilt and turn systems

#### Options

Length: of square spindle 7 x 24, 26, 32, 35, 40 mm (other spindle  
Lengths: upon request)  
Polished stainless steel  
RAL lacquered  
Also available as a pair