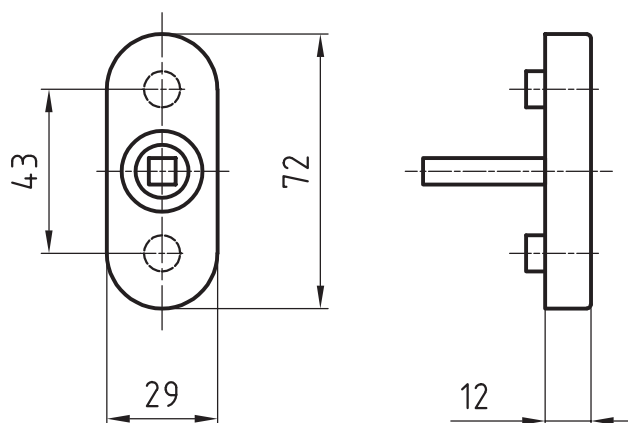


5616 DC

Spindle rose



Standard version

Satin stainless steel
Without cover
Clip on rose
Square spindle 7 x 38 mm
Fixing centres 43 mm

Options

Length: of square spindle 7 x 24, 26, 32, 35, 40, 114 mm (other spindle Lengths: upon request)
Polished stainless steel
RAL lacquered
PVD lacquered