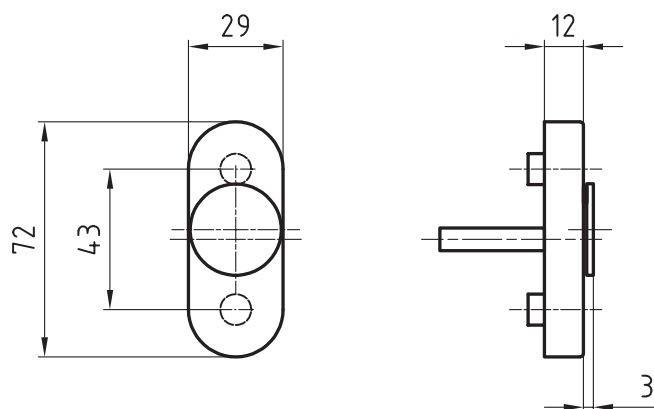


## 5616 DCV

Spindle rose with cover



### Standard version

Satin stainless steel

With cover

Clip on rose

Square spindle 7 x 38 mm

Fixing centres 43 mm

### Options

Length: of square spindle 7 x 24, 26, 32, 35, 40, 114 mm (other spindle Lengths: upon request)

Polished stainless steel

RAL lacquered

PVD lacquered