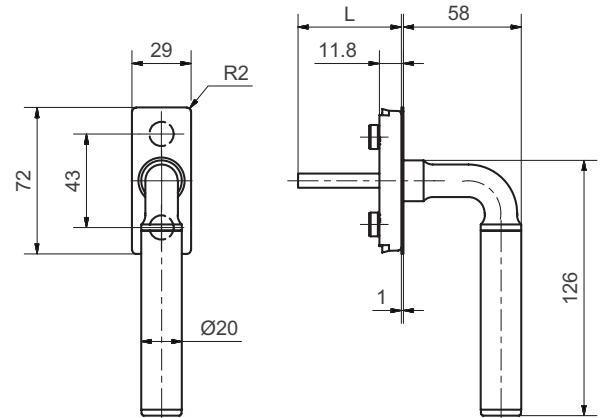


50006/51102 FF

Stainless steel window handle flush mounted



Standard version

Window handle 126 mm, Ø 20 mm
Satin nickled ZNmn shoulder, Satin stainless steel tube and rose
4 x 90° stop
Left / right applicable
Square spindle 7 x 38 mm
72 x 29 x 12 mm
Projection: 58 mm
Fixing centres 43 mm
Studs Ø 9,5 / 12 mm
Suitable for all tilt and turn systems

Options

Length: of square spindle 7 x 24, 32, 35, 40 mm (other spindle
Lengths: upon request)