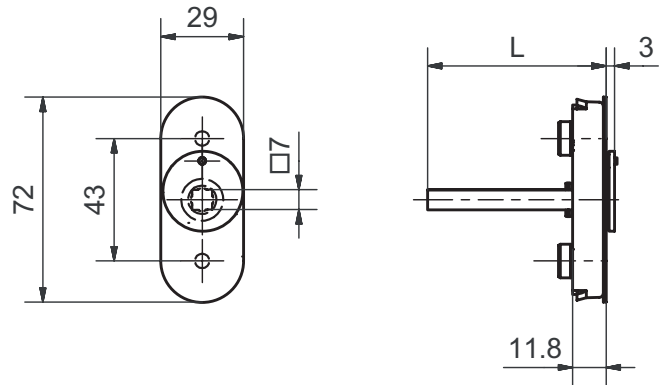


51101 DfV

Spindle rose flush with cover



Standard version

Satin stainless steel
4 x 90° ball stop
Left / right applicable
Square spindle 7 x 38 mm
72 x 29 x 12 mm
Fixing centres 43 mm
Studs Ø 9,5 / 12 mm
Suitable for all tilt and turn systems
With cover

Options

Polished stainless steel
RAL lacquered
PVD lacquered
Length: of square spindle 7 x 24, 32, 35, 40 mm (other spindle
Lengths: upon request)